

TM and © Laurent de Brunhoff

RAL Tier A Status

Tim Adye

Rutherford Appleton Laboratory

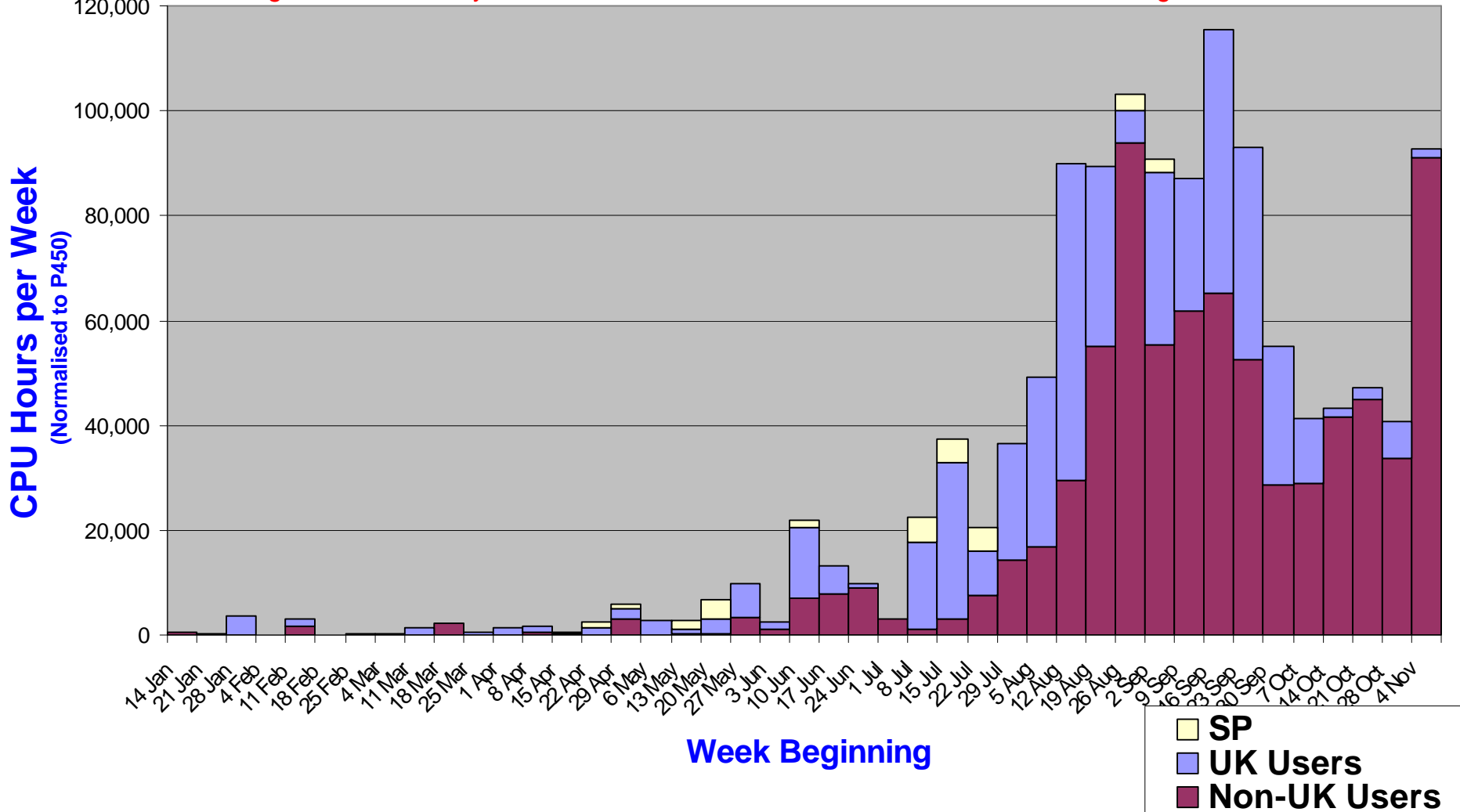
BaBar UK Collaboration Meeting

University of Bristol

13th November 2002

RAL Batch CPU Use

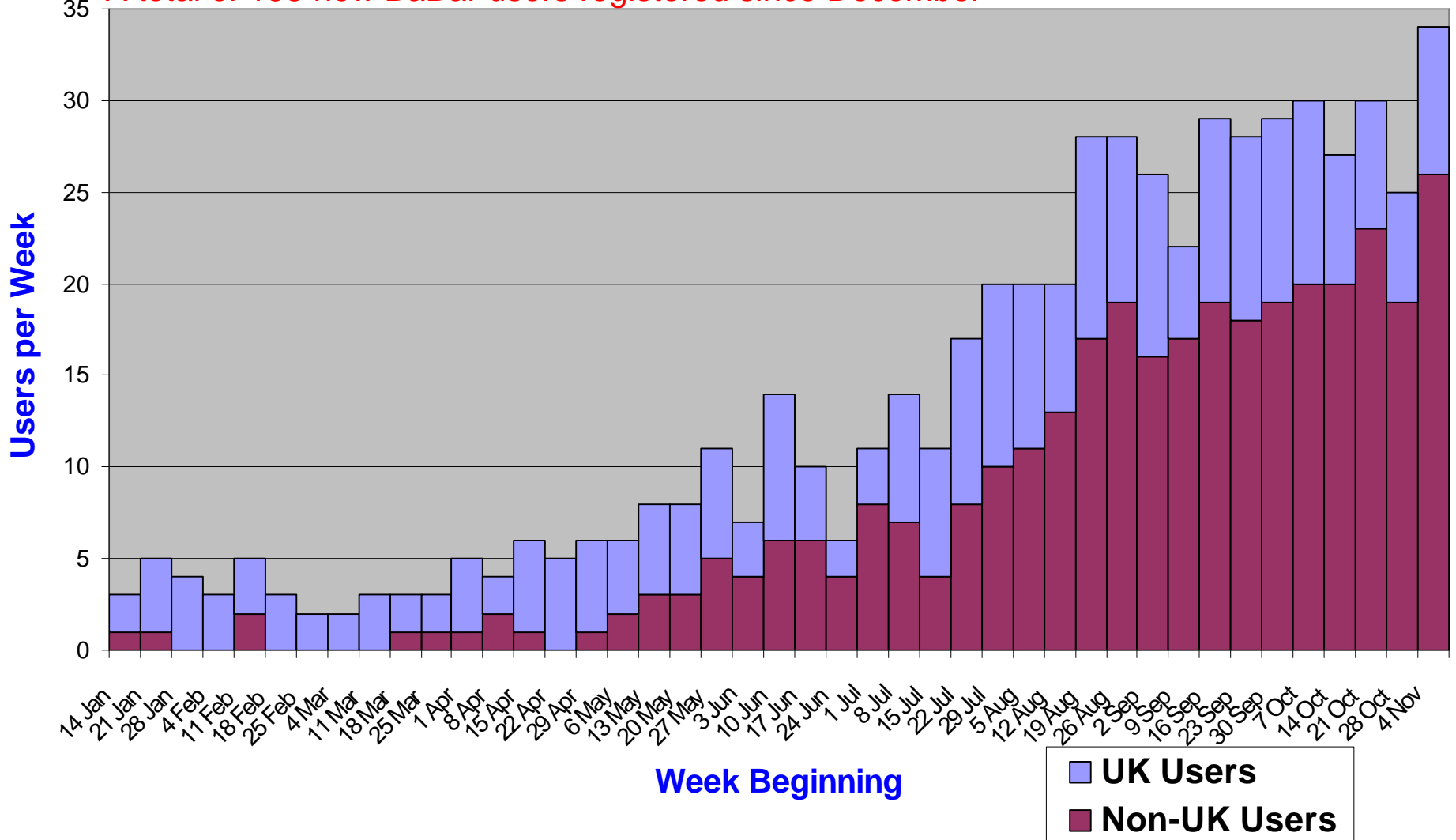
Full usage at full efficiency of BaBar CPUs = 106,624 Hours/Week; 59,733 according to MOU



RAL Batch Users

(running at least one non-trivial job each week)

A total of 153 new BaBar users registered since December



Recent Changes

- New system manager, Phil Radden.
- Disk problems earlier in the year tracked down to a bad batch of drives
 - All disks now replaced
- New web-based user registration procedure
 - BaBar home page -> New Accounts
- Now ready to upgrade half the farm to RedHat 7.2 imminently
 - Can still build RH6 jobs with analysis-13 and run on RH7.2 batch queues
 - Can also build on RH7.2 with analysis-13b
 - Ulrik posted instructions for submitting to HyperNews

Plans

- Install data dedicated **import-export** machines
 - Fast (Gigabit) network connection
 - Special firewall rules to allow **scp**, **bbftp**, **bbcp**, etc.
- **AFS authentication** improvements
 - PBS token passing and renewal
 - integrated login (AFS token on login, like SLAC)
- Objectivity support
 - Works now for **private federations**, but no data import
 - First step will be to provide Objy conditions database access

Plans

- Support Grid “**generic accounts**”, so special RAL user registration is no longer necessary
- Upgrade Suns to **Solaris 8** and integrate into PBS queues
- Procure next batch of **hardware**
 - Delivery probably early 2003
 - Hopefully more disk before then

Support

- For help, post to “RAL Tier A” HyperNews forum; or
- contact Emmanuel Olaiya (at SLAC) or me (at RAL)