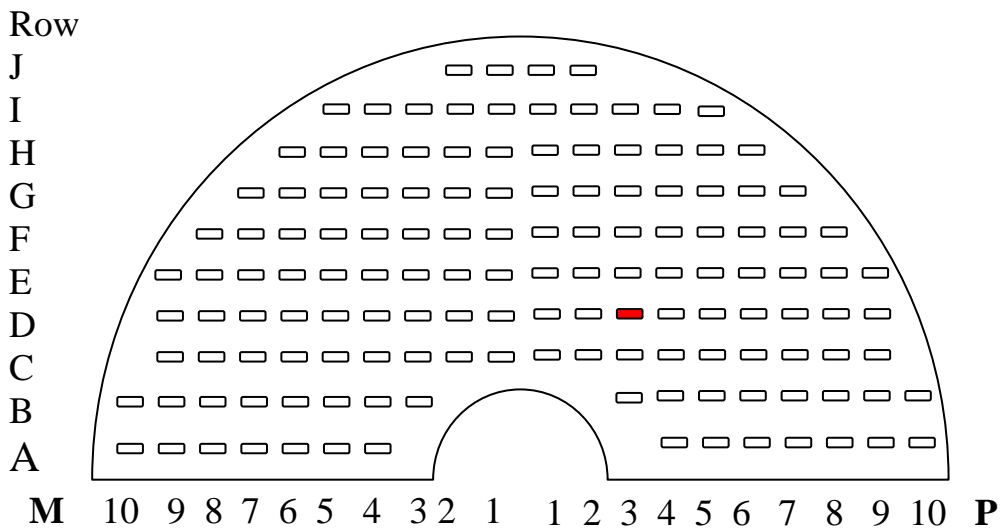
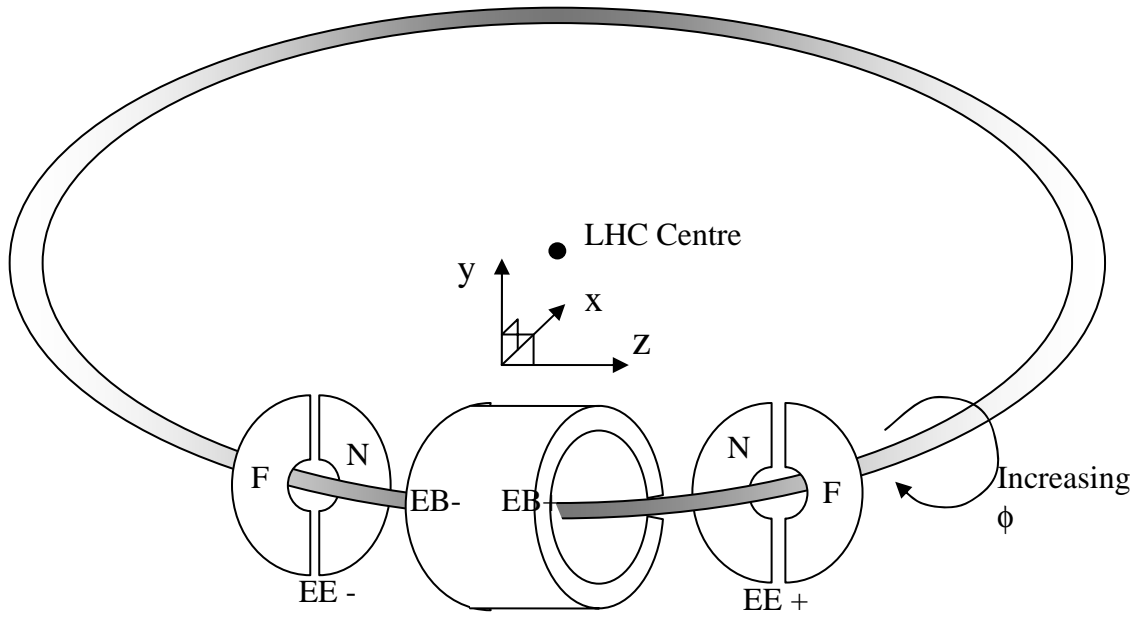


Barcodes for Dee backplate slots HH-18/07/06



Dee 1	EE+F
Dee 2	EE+N
Dee 3	EE-N
Dee 4	EE-F

Dee viewed looking towards the interaction point i.e. from behind the backplate.  
**Barcode**  
 DEEn-rmms  
 n - Dee number as in table on left (1-4)  
 r - Letter indicating row as above  
 mm - column number as above  
 s - side P or M  
 e.g. Red slot above in Dee 2 would have barcode DEE2-D03P