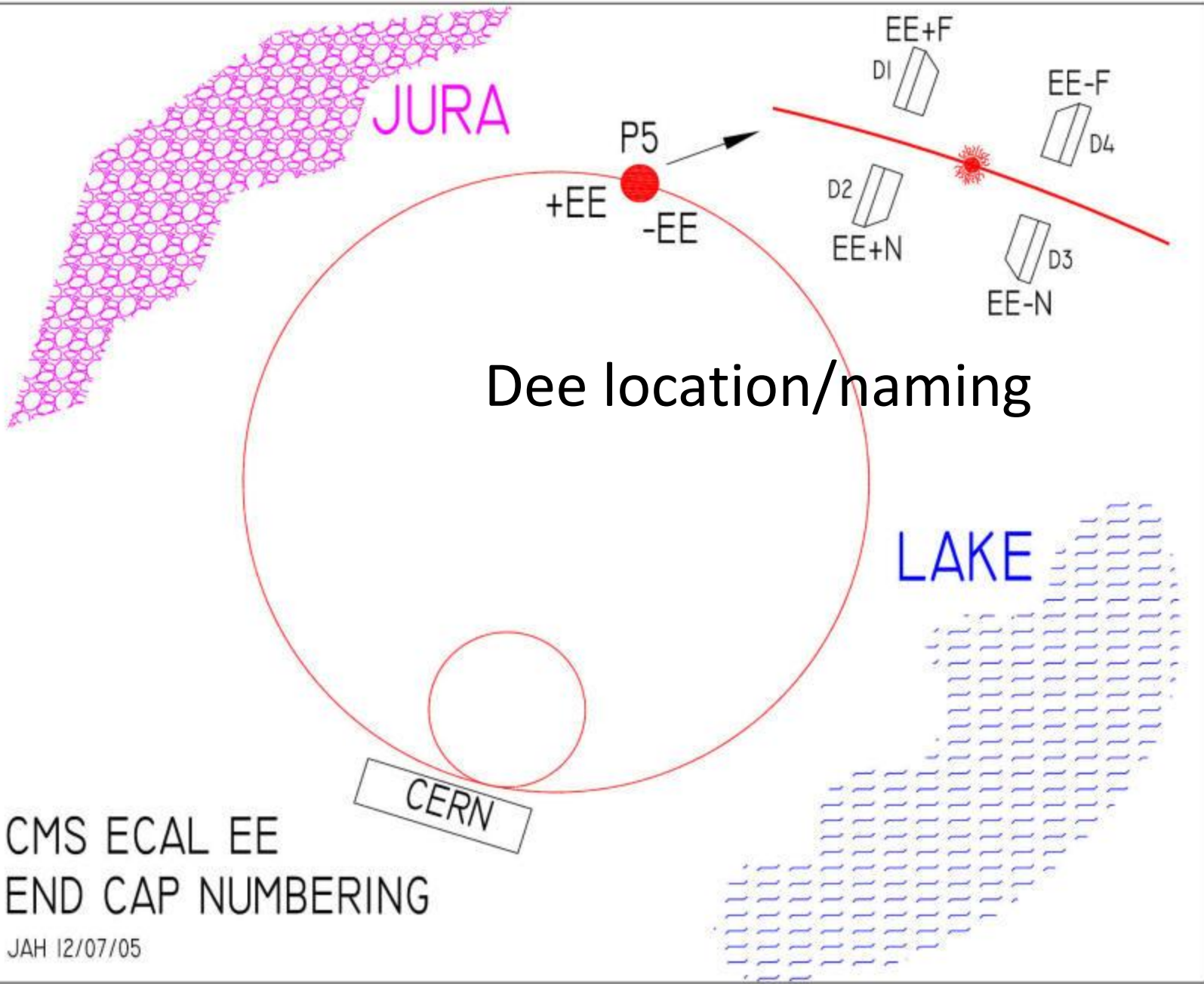


# EE mappings for PTM/HM probes

S.Zelepoukine

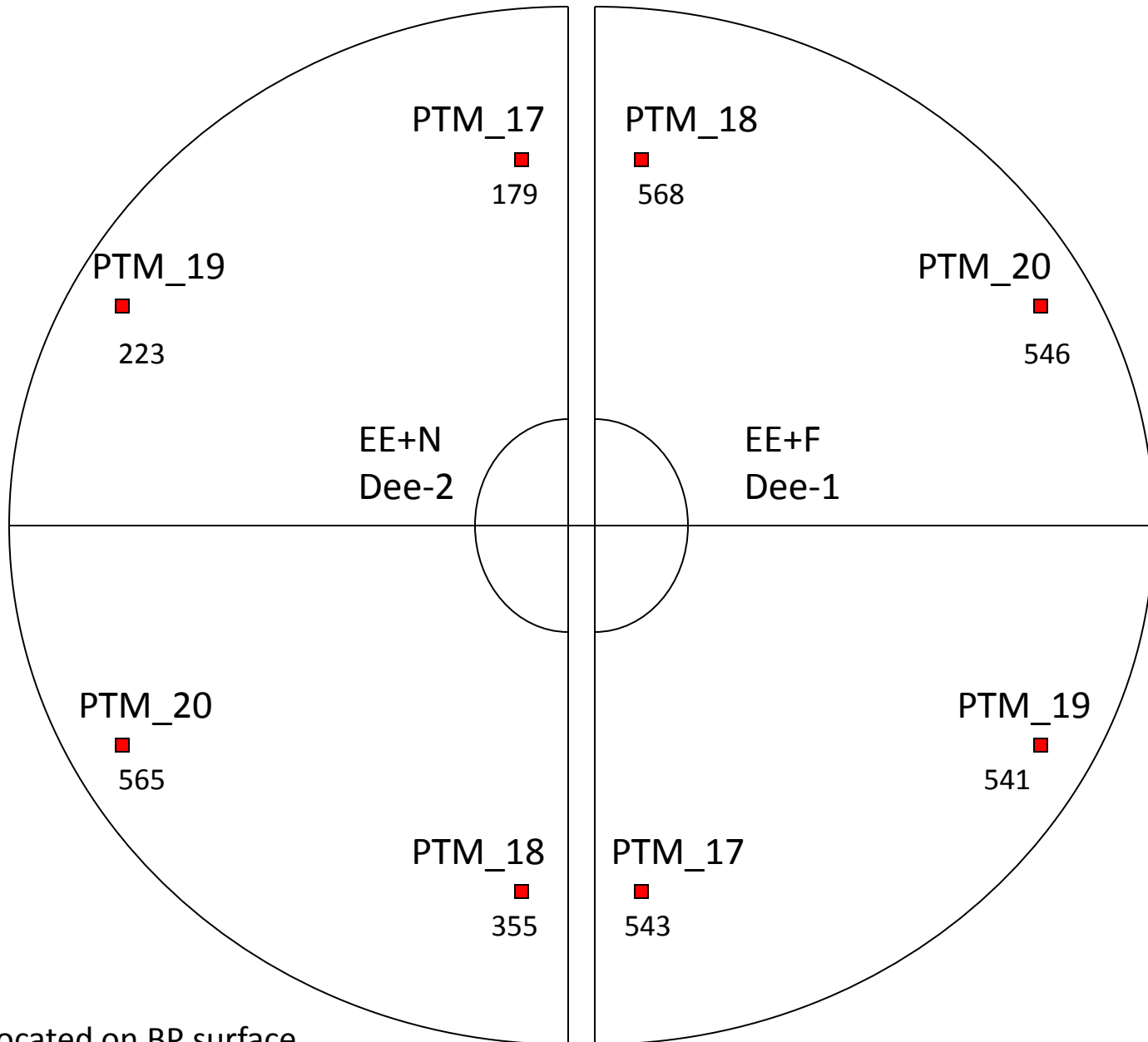
16.Jun.09



CERN

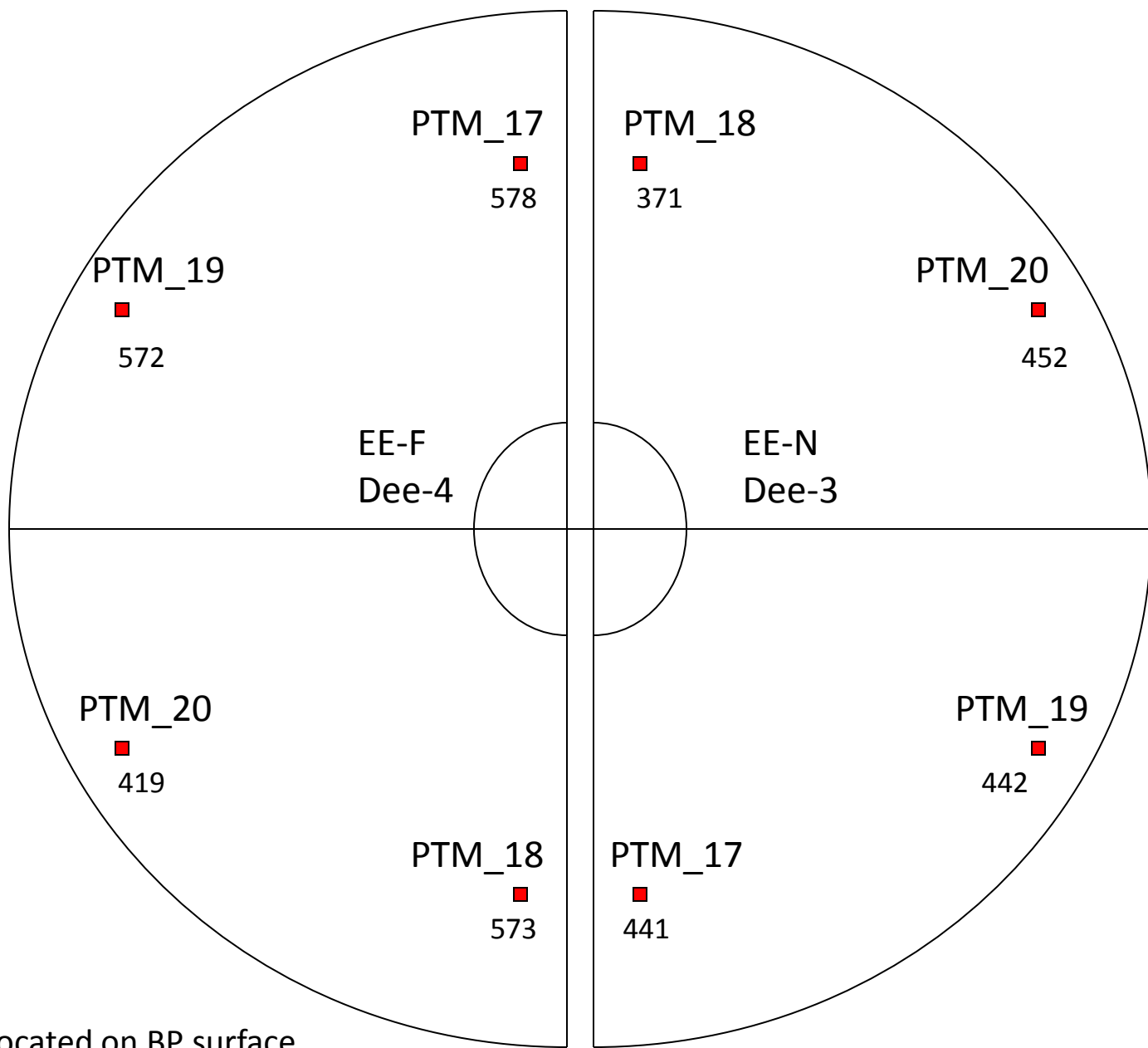
CMS ECAL EE  
END CAP NUMBERING

JAH 12/07/05



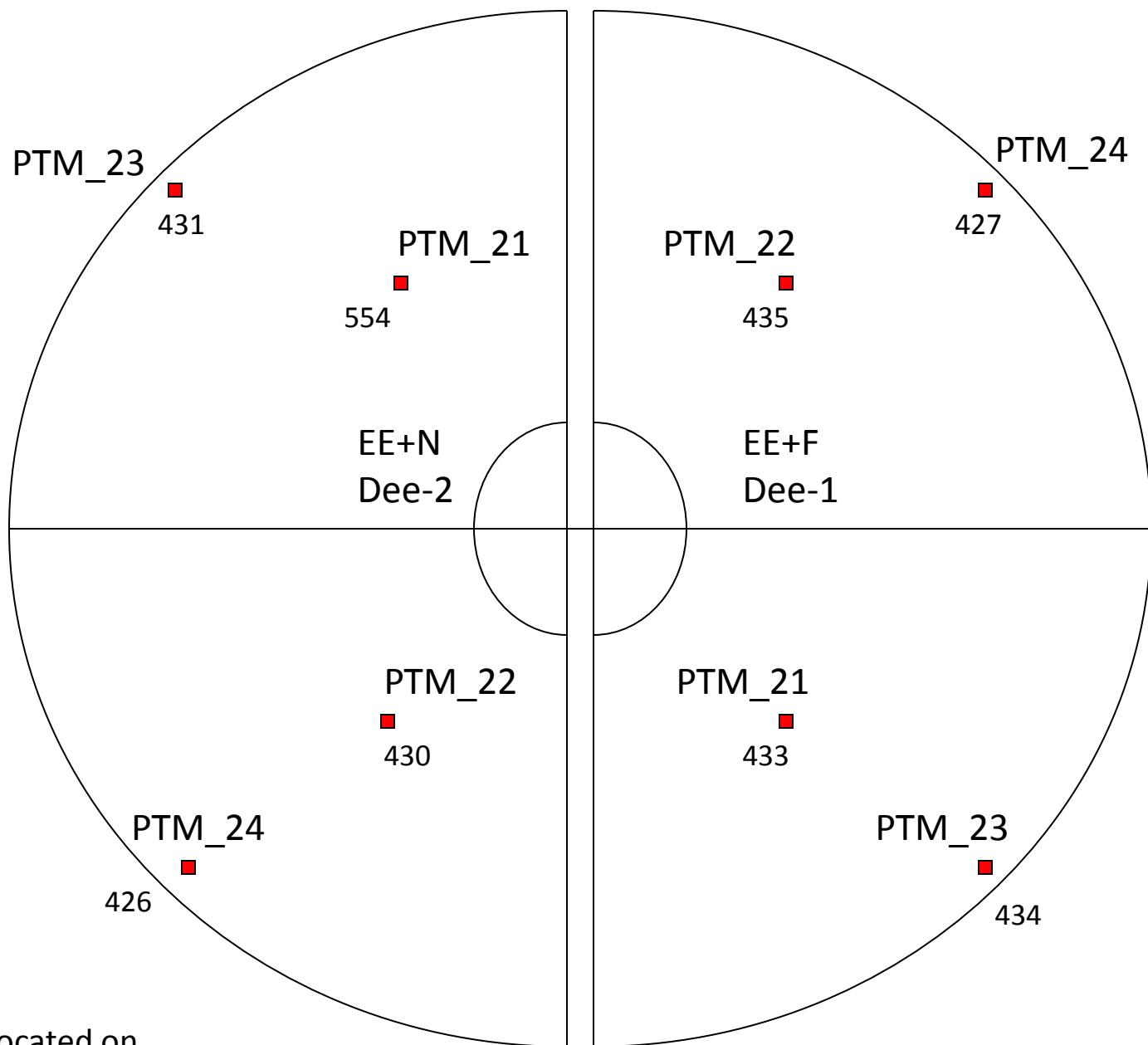
Probes are located on BP surface  
at the electronics side

View from CMS IP



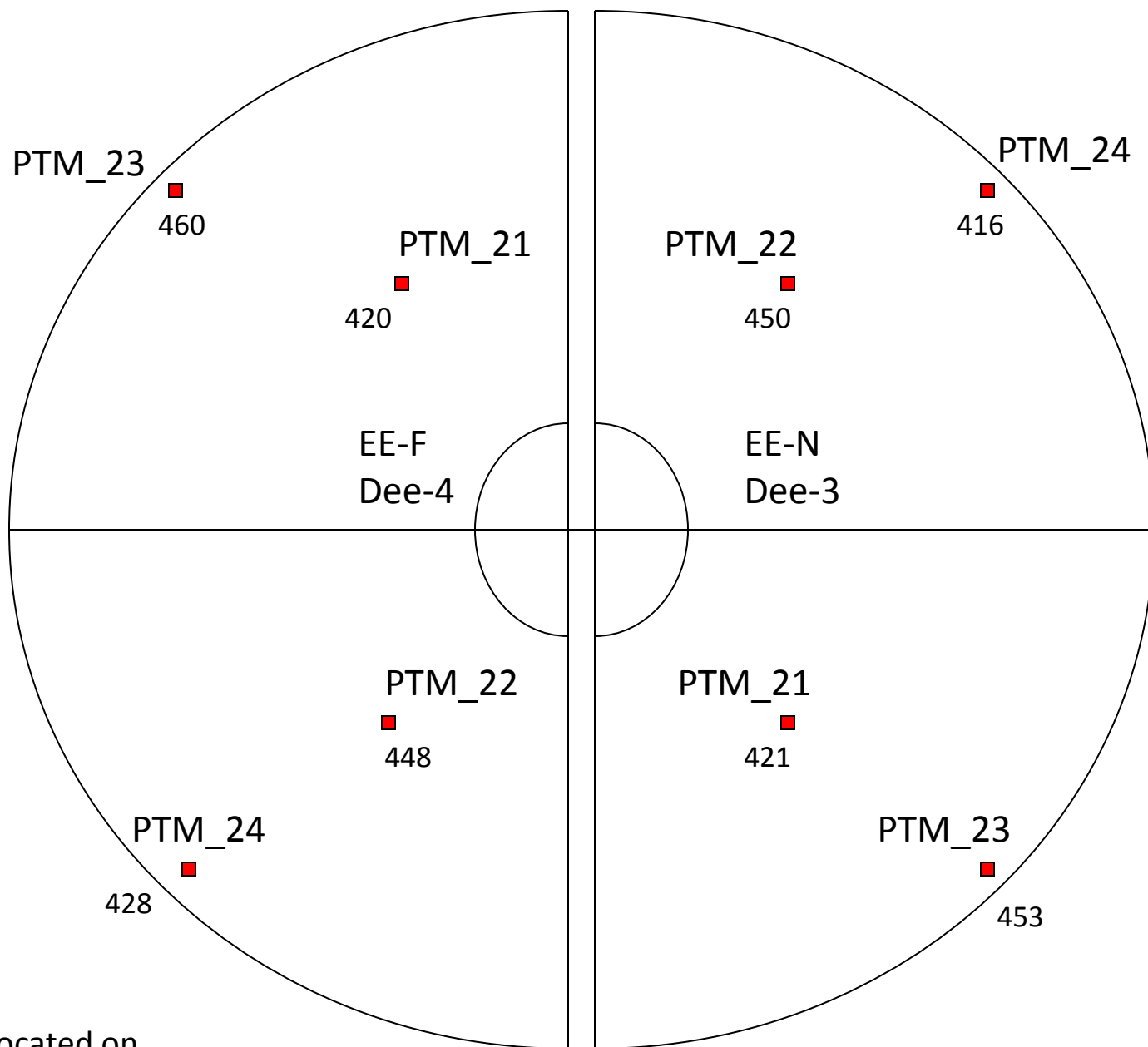
Probes are located on BP surface  
at the electronics side

View from CMS IP



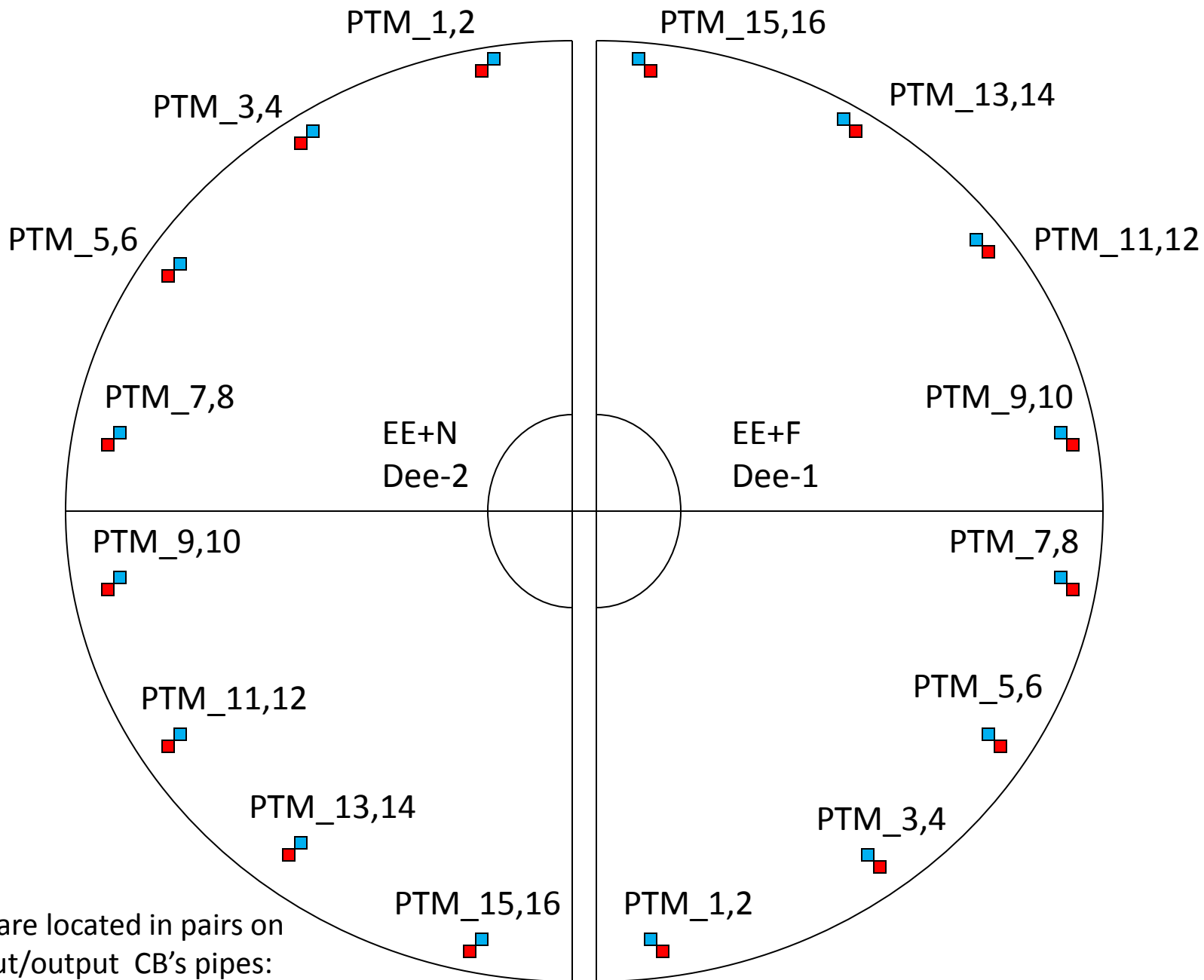
Probes are located on the inner screen surface

View from CMS IP

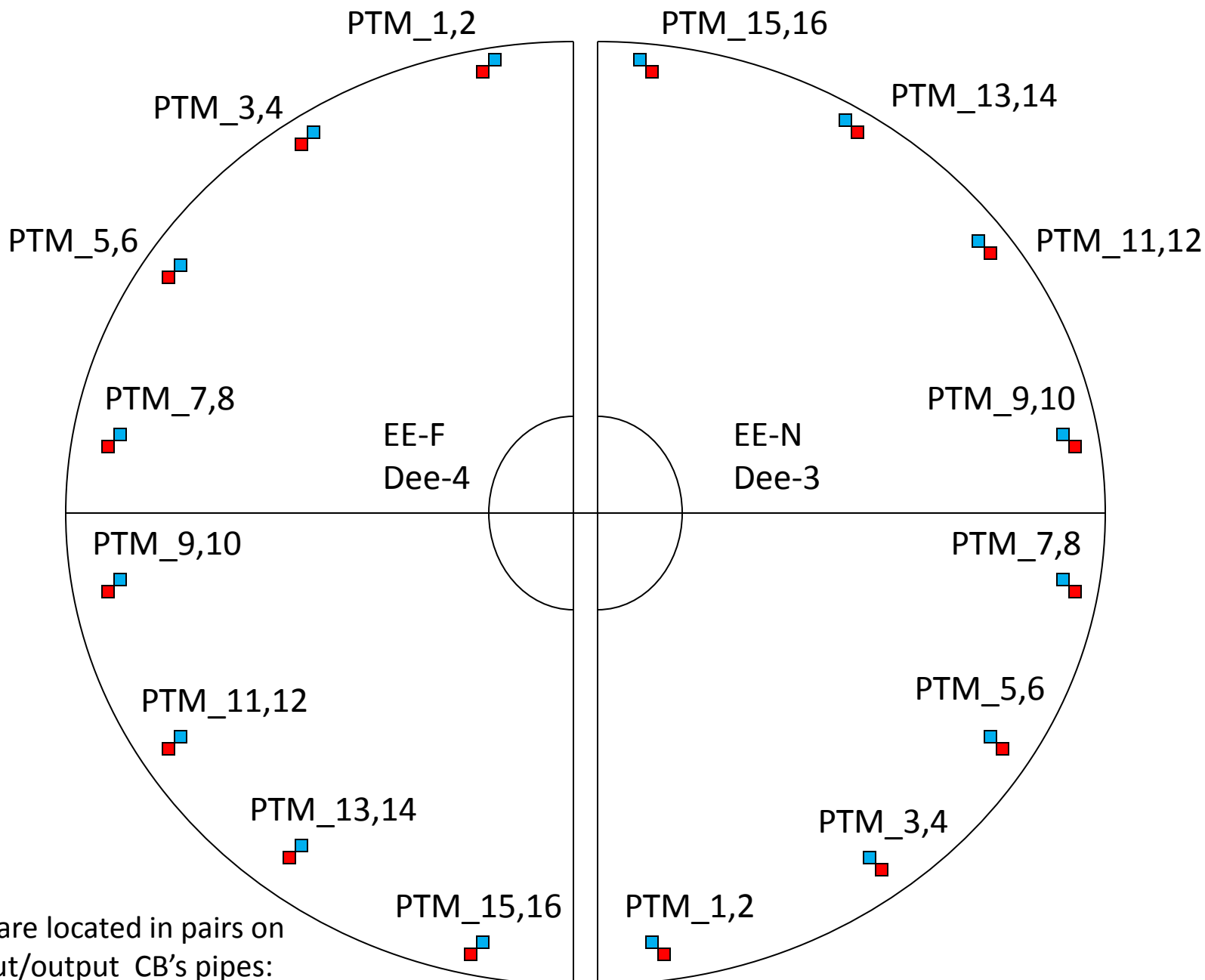


Probes are located on the inner screen surface

View from CMS IP

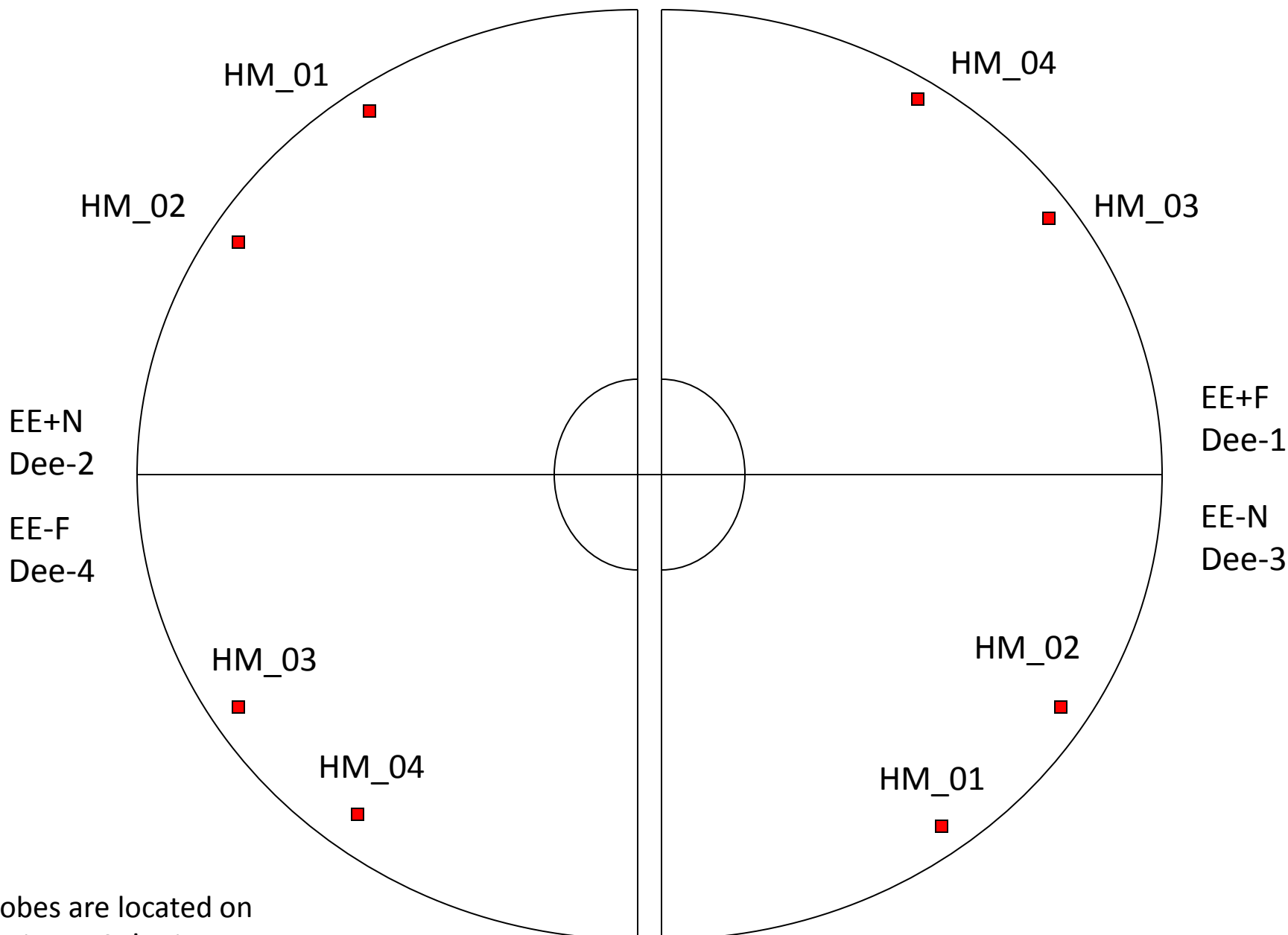


Probes are located in pairs on the input/output CB's pipes: PTM\_<in>,<out>



Probes are located in pairs on the input/output CB's pipes: PTM\_in,out

# EE HM probes

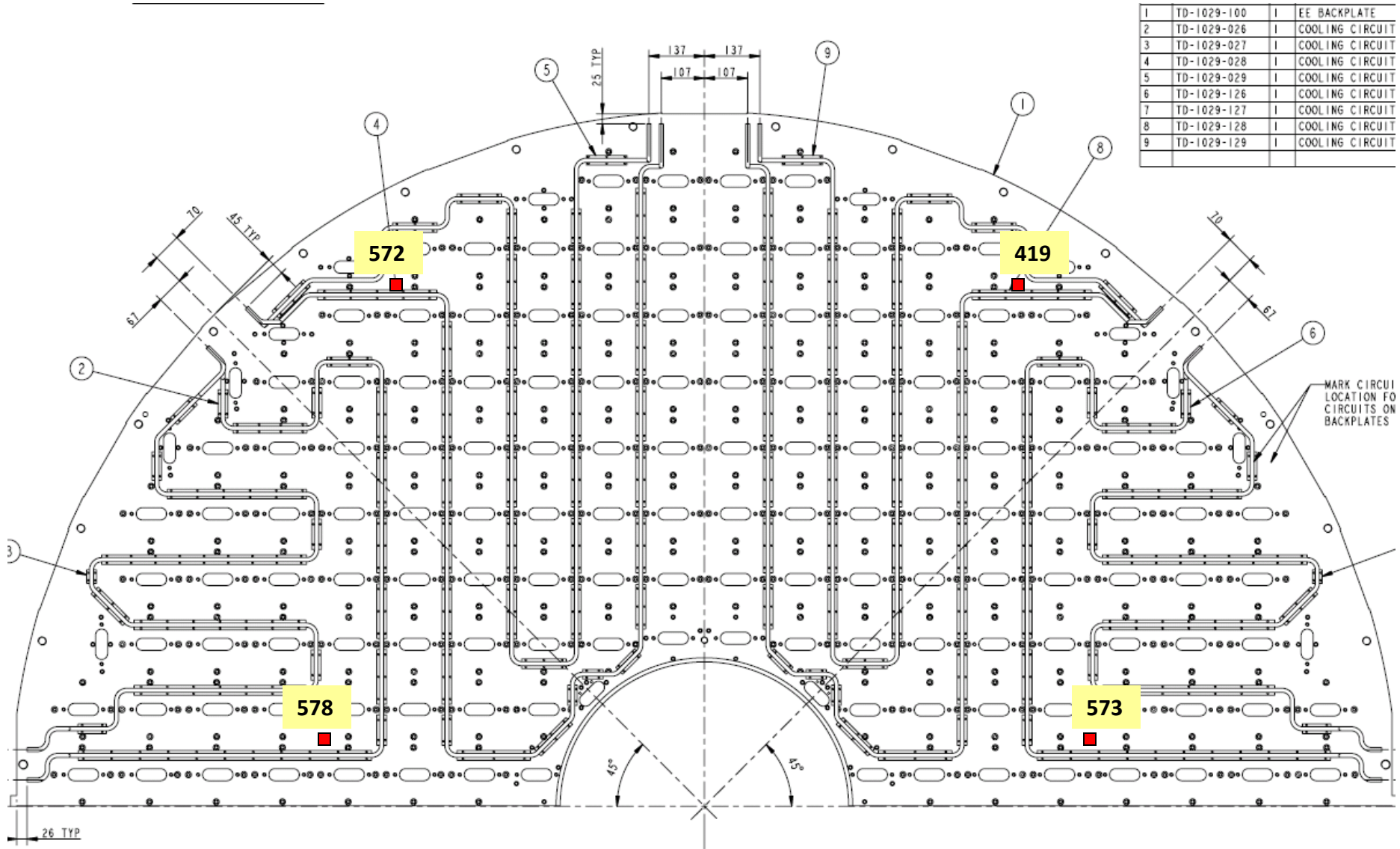


Probes are located on the input CB's pipes

View from CMS IP

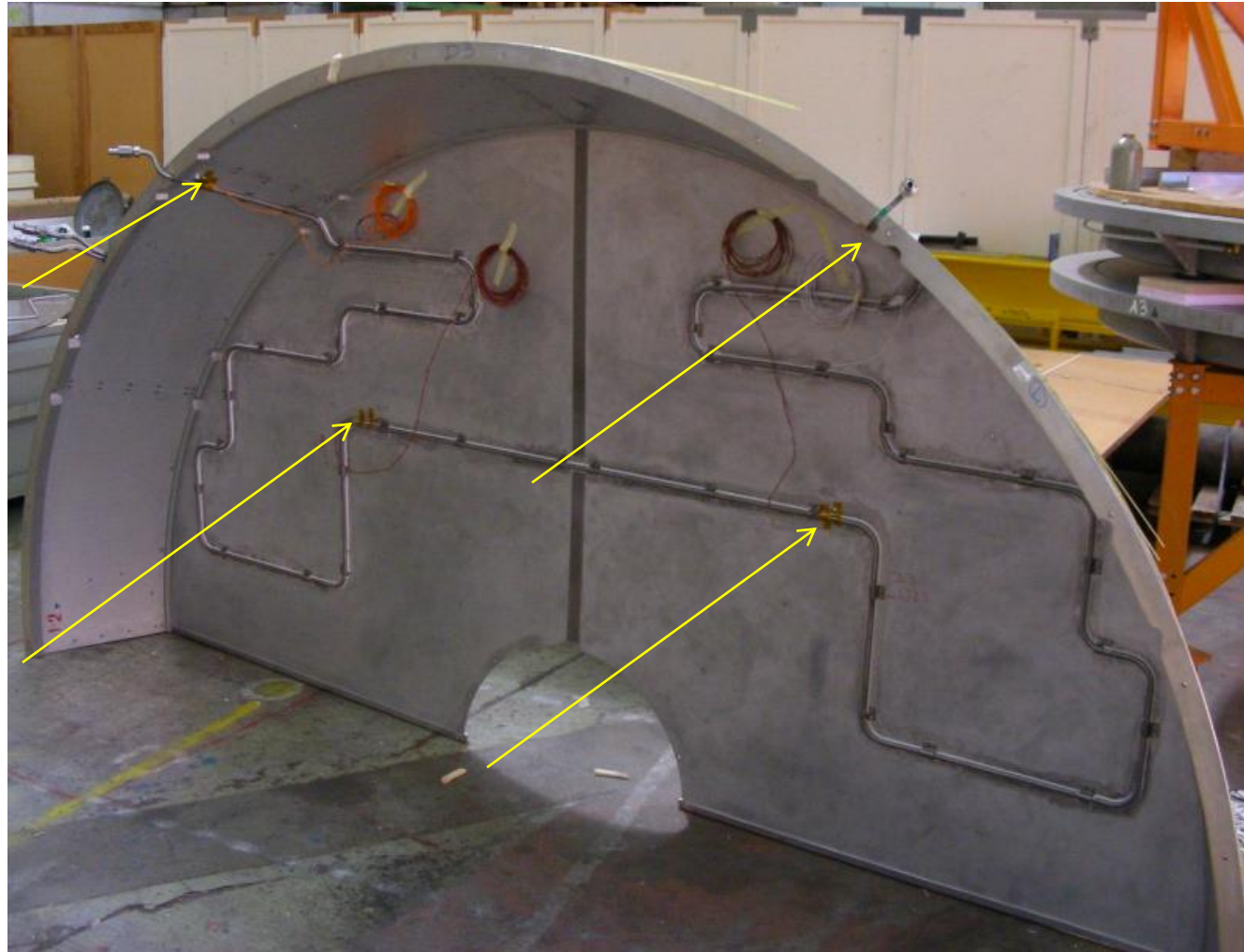
Example:

# EE Dee-4: PTM probes on the backplate (view from the electronics side)



1	TD-1029-100	1	EE BACKPLATE
2	TD-1029-026	1	COOLING CIRCUIT
3	TD-1029-027	1	COOLING CIRCUIT
4	TD-1029-028	1	COOLING CIRCUIT
5	TD-1029-029	1	COOLING CIRCUIT
6	TD-1029-126	1	COOLING CIRCUIT
7	TD-1029-127	1	COOLING CIRCUIT
8	TD-1029-128	1	COOLING CIRCUIT
9	TD-1029-129	1	COOLING CIRCUIT

Example: PTM probes on the environmental screen



Example: PTM probes on CB's in/out pipes  
HM probes

Note: all probes are protected with armaflex (not shown)

HM probe

