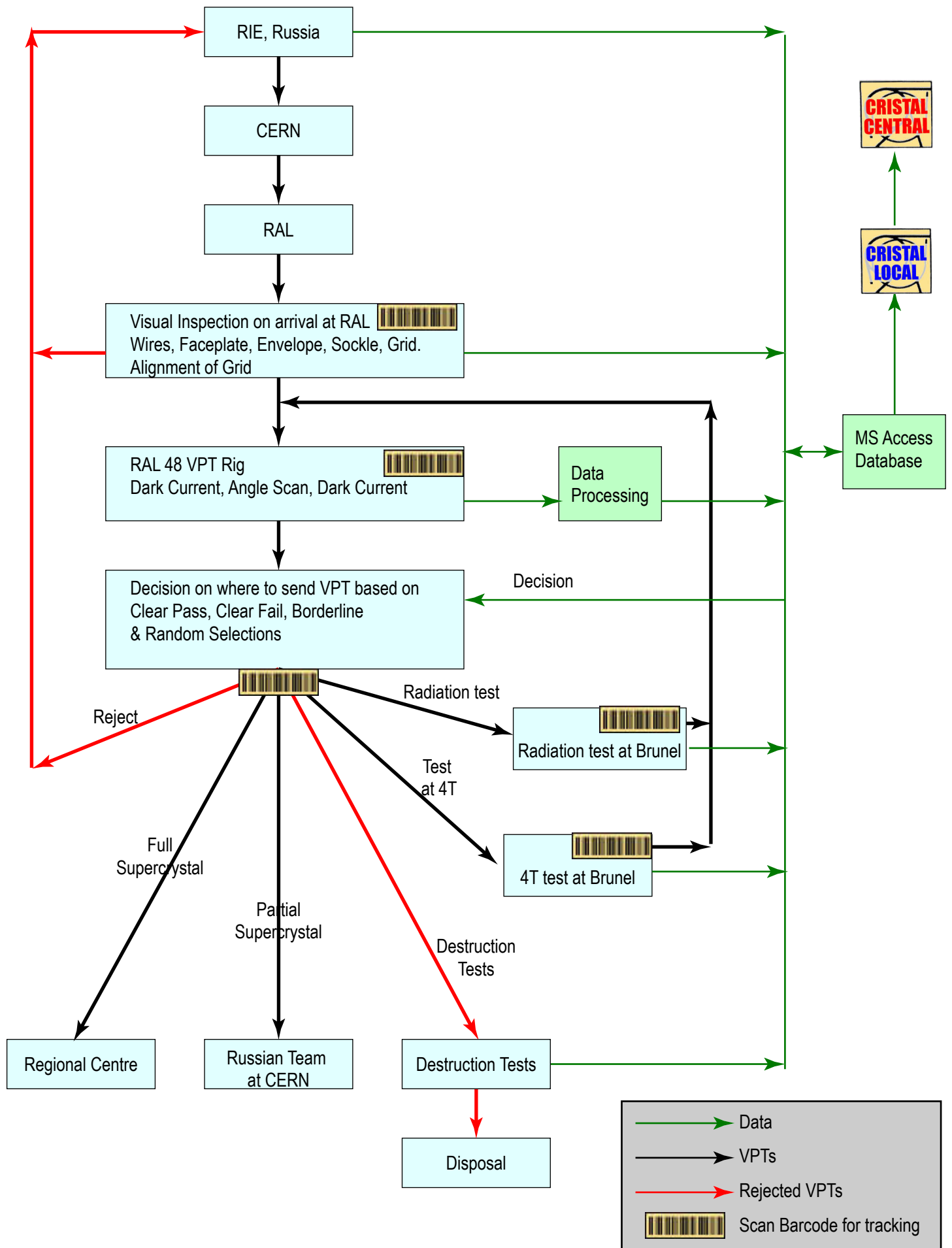
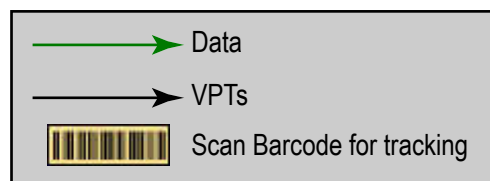
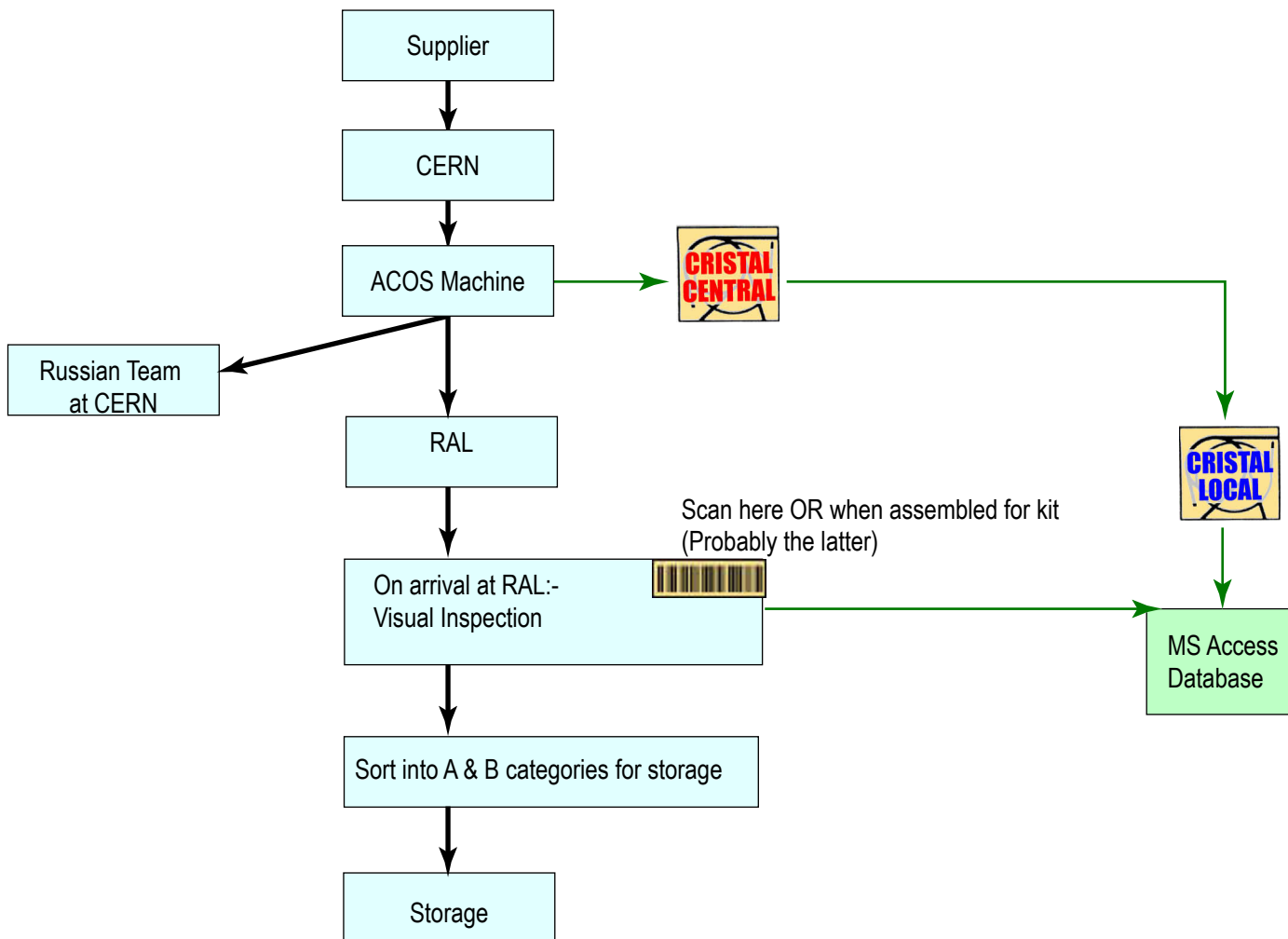


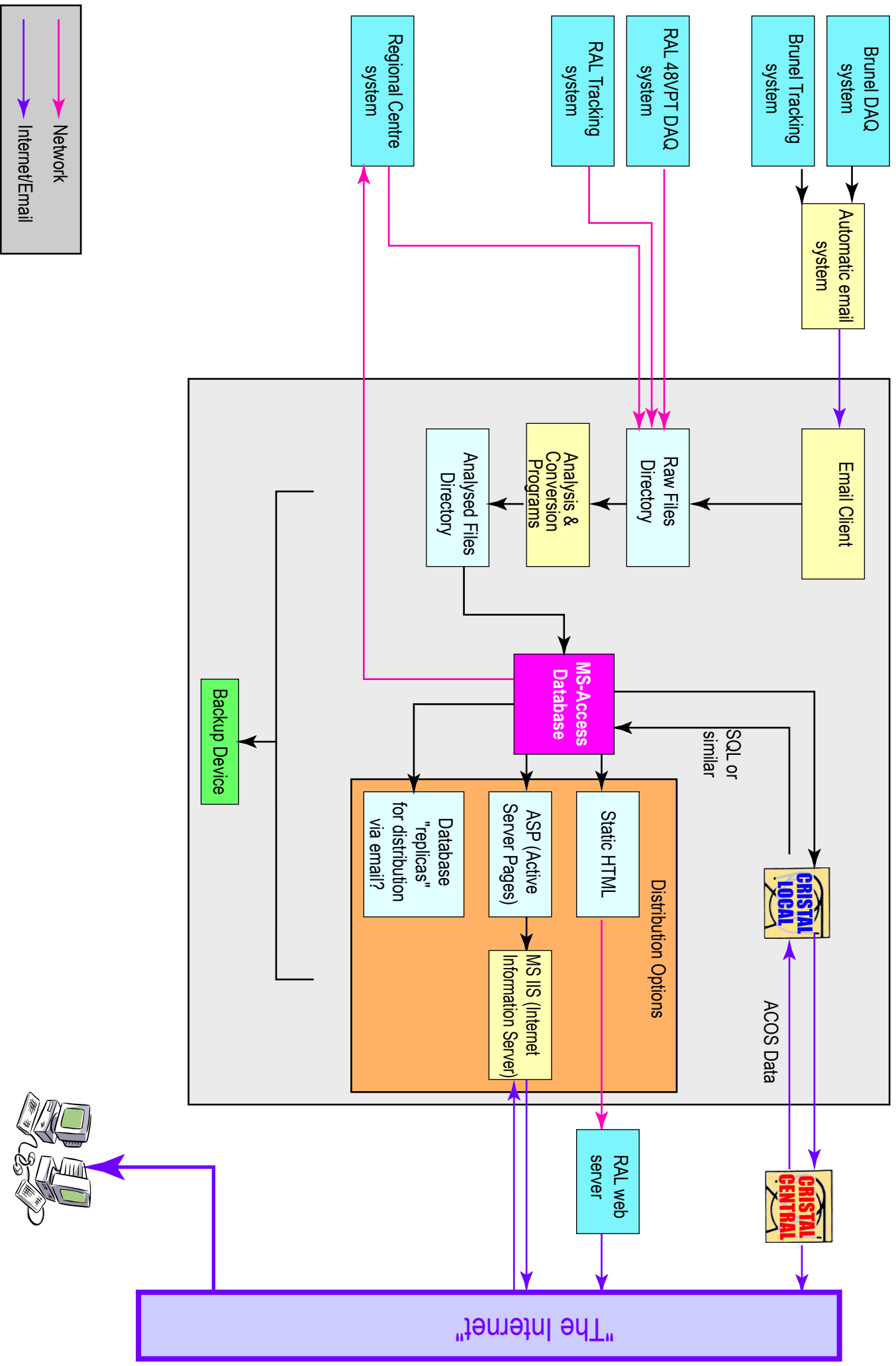
VPT procedures



Crystal procedures (Provisional)



Server Layout



Workstations

Regional Centre

Proposal for Assembly Procedure Tracking & Procedures

NIB: It should be noted that this layout is proposed to save space - it will not necessarily be cheaper than having a PC at each assembly station, especially when set-up costs are included

Parts Budget £350-£400 +VAT per station
This excludes the PC which we should be able to get FOC

